

LaSalle Mariners Yacht Club

2025 - Pursuit Race

June 22, 2025

Notice of Race and Sailing Instructions

1 RULES

1.1 This event is governed by the Racing Rules of sailing 2025-2028.

1.2 MWPFRF ratings system shall be used to score this race.

2 COMMUNICATION

2.1 On the water, channel 68 will be monitored and starting times called out.

3 ELIGIBILITY AND ENTRY

3.1 This race is open to all sailboats.

3.2 This is a JOG only race.

3.3 Boats may enter the event by signing the sheet in the LMYC Clubhouse before 6pm June 21, 2025, or by registering on noticeofrace.net. All forms of registration confirm your agreement and understanding of all concussion and safety policies and procedures, protocols and codes of conduct apply.

4 FEES

4.1 There is no fee for this event.

5 SCHEDULE

5.1 First start will be at 1:00PM.

5.2 Starting times will be handed out at the skippers meeting at 12:15pm

6 COURSES

6.1 See attachment A for course starts, finishes, locations and distances. A regular club course may be chosen as well based on the wind and weather.

8 PRIZE

8.1 The winner will have their name engraved on the Pursuit Race trophy that resides at LMYC.

9 RISK STATEMENT

9.1 RRS 3 states: "The responsibility for a boat's decision to participate in a race or to continue to race is hers alone." By participating in this event each competitor agrees and acknowledges that sailing is a potentially dangerous activity with inherent risks. These risks include strong winds and rough seas, sudden changes in weather, failure of equipment, boat handling errors, poor seamanship by other boats, loss of balance on an unstable platform and fatigue resulting in increased risk of injury. Inherent in the sport of sailing is the risk of permanent catastrophic injury or death by drowning, trauma, hypothermia, or other causes.

10 TIME LIMITS

10.2 There is no time limit for this race - Enjoy your sail, enjoy your day, have fun.

11 PROTESTS AND REQUESTS FOR REDRESS

11.1 There will be no protests accepted for this race

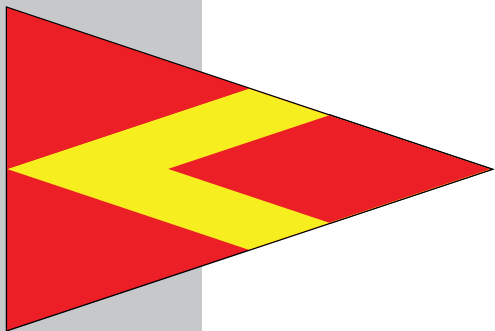
12 DISCLAIMER OF LIABILITY

12.1 Competitors participate in his regatta entirely at their own risk. See RRS 4, Decision to race. The organizing authority will not accept any liability for material damage or personal injury or death sustained in conjunction with, or prior to, during, or after the regatta.

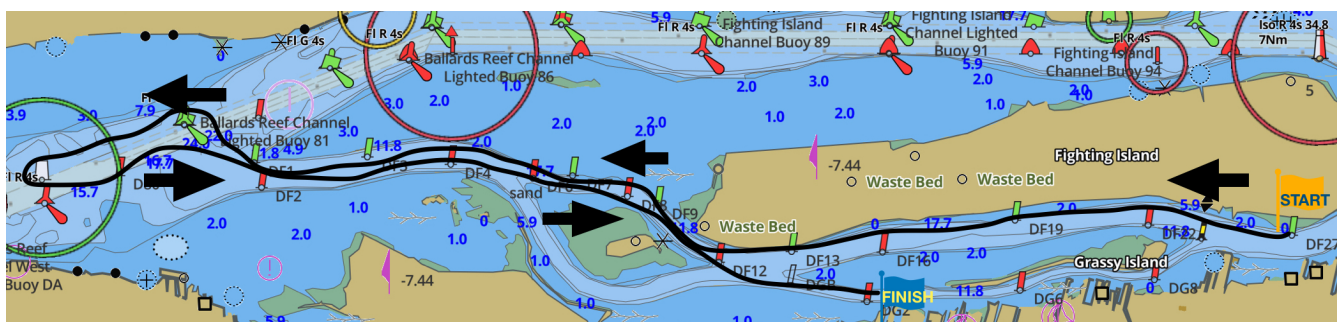
13 FURTHER INFORMATION

13.1. For further information please reach out to Brian Casey or lmocracing@gmail.com

2025 - PURSUIT RACE



Attachment A



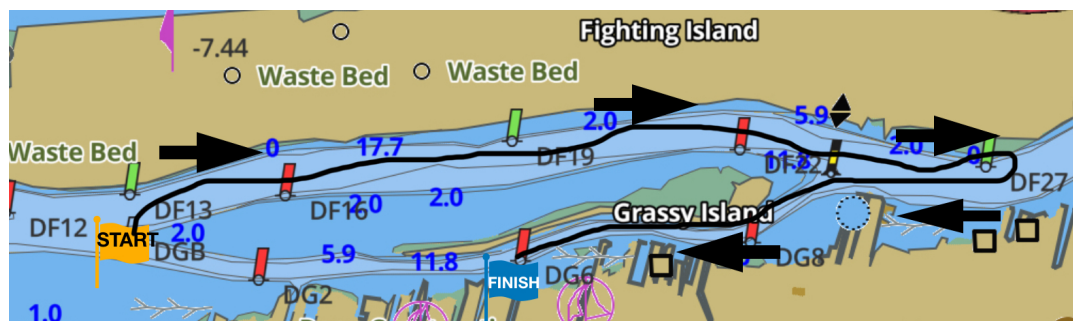
Course 1

Start at DF27, head downriver passing through the west side of Grassy Island and through the cut. Continue downriver and head towards Ballard's Reef channel lighted buoy 81 and leave to port. Continue downriver, then round Ballard's Reef channel light D77 to port. Head upriver leaving DF2 to starboard, then DF4 to starboard. Leave Turkey Island to STARBOARD and continue downriver leaving DGB or Port and finish between the RC and DG2. 9.35NM

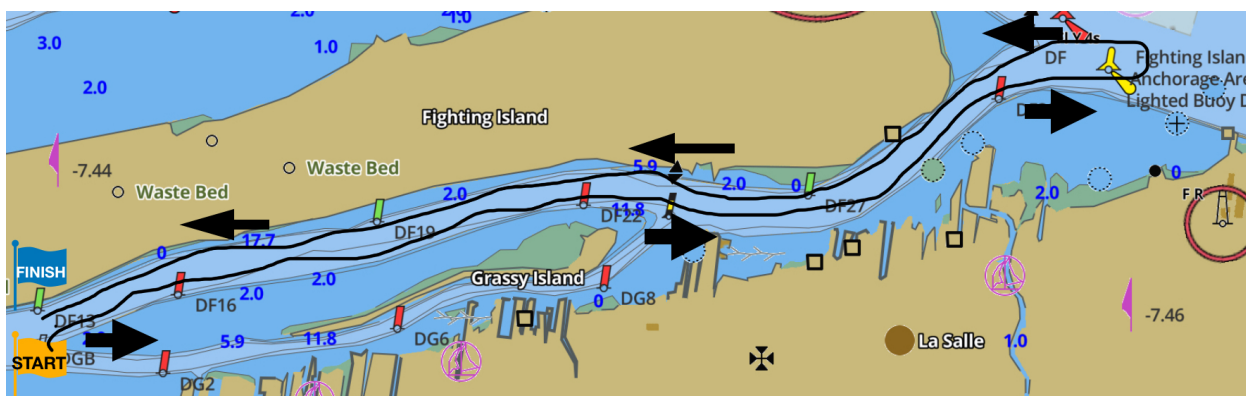


Course 2

Start at DF27 then head downriver passing by the west side of Grassy Island leaving Grassy Island then DGB to port. Continue downriver through the cut to DF3 rounding to port then head upriver leaving Turkey Island to starboard, heading through the cut and finishing at DGB. 6.38NM



Course 3 Start at DGB and head upriver along the west side of Grassy Island to Green DF27 rounding to starboard. Then head downriver along the east side of Grassy Island, leaving Grassy Island to Starboard to finish between Red DG6 and the RC boat. 3.65NM



Course 4 Start at DGB and head upriver along the west side of Grassy Island leaving Grassy Island to Starboard to Fighting Island Anchorage Area Lighted Buoy DQ and round to Port. Then head downriver leaving Grassy Island to Port. The finish line will be between the RC boat and DGB 6.57NM